

*Train
hugger*

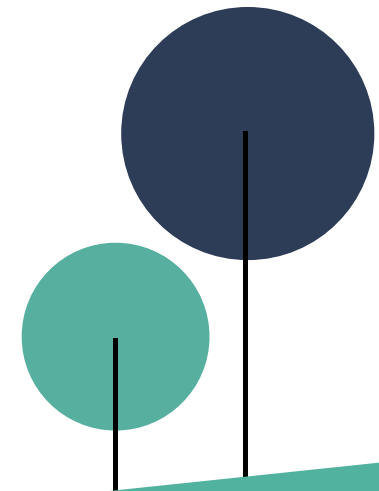
and



Grants for resilient woodlands and treescapes

In partnership with

RFS
ROYAL FORESTRY SOCIETY



In this guide

Overview

What can you apply for?

Who can apply?

When to apply for a grant

How we assess applications

Additional information

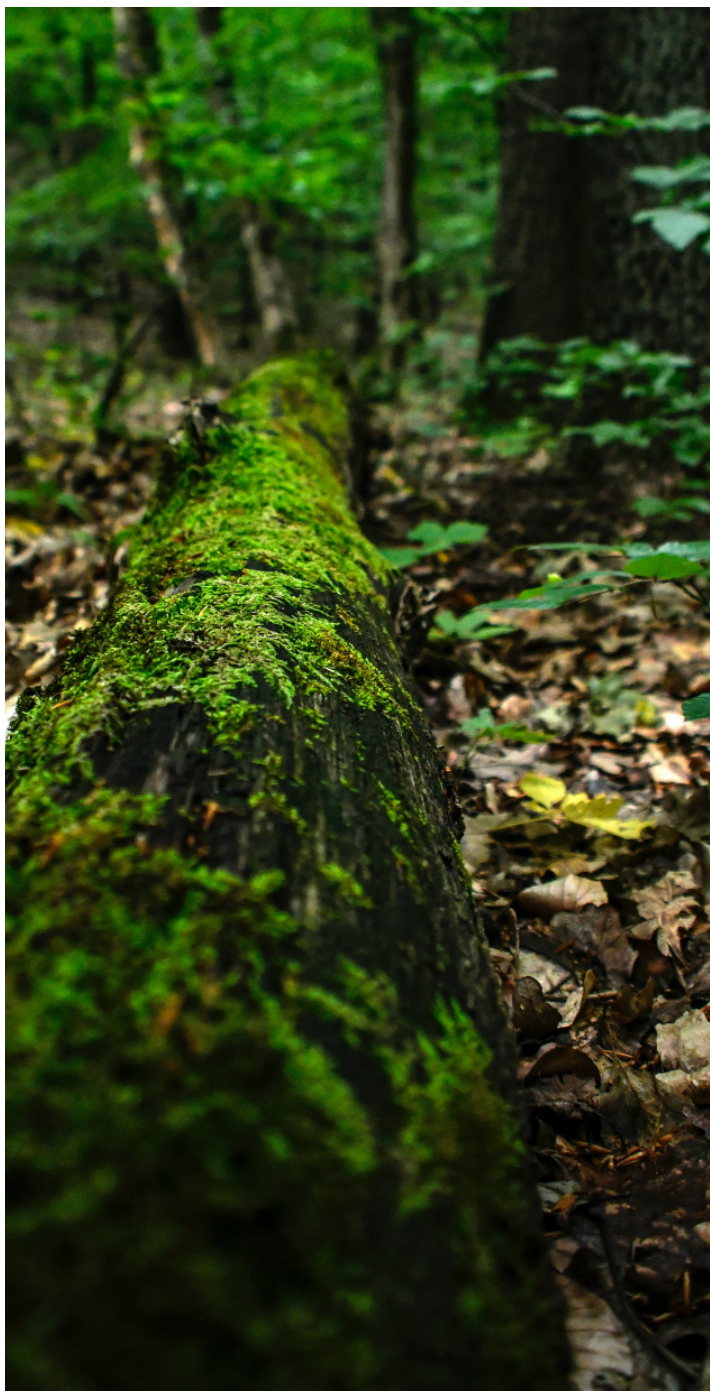
The application process

If we award you a grant

Application form

Contact





Overview

The Royal Forestry Society (RFS), Royal Scottish Forestry Society (RSFS) Trainhugger and GreenTheUK have joined forces to help people plant trees that will survive and thrive into the future. Creating better, more resilient treescapes for our environment, for people and for the economy.

Trainhugger and GreenTheUK offer money from rail users and businesses as grants to help RFS and RSFS members plant trees, at a rate of 50p per tree.

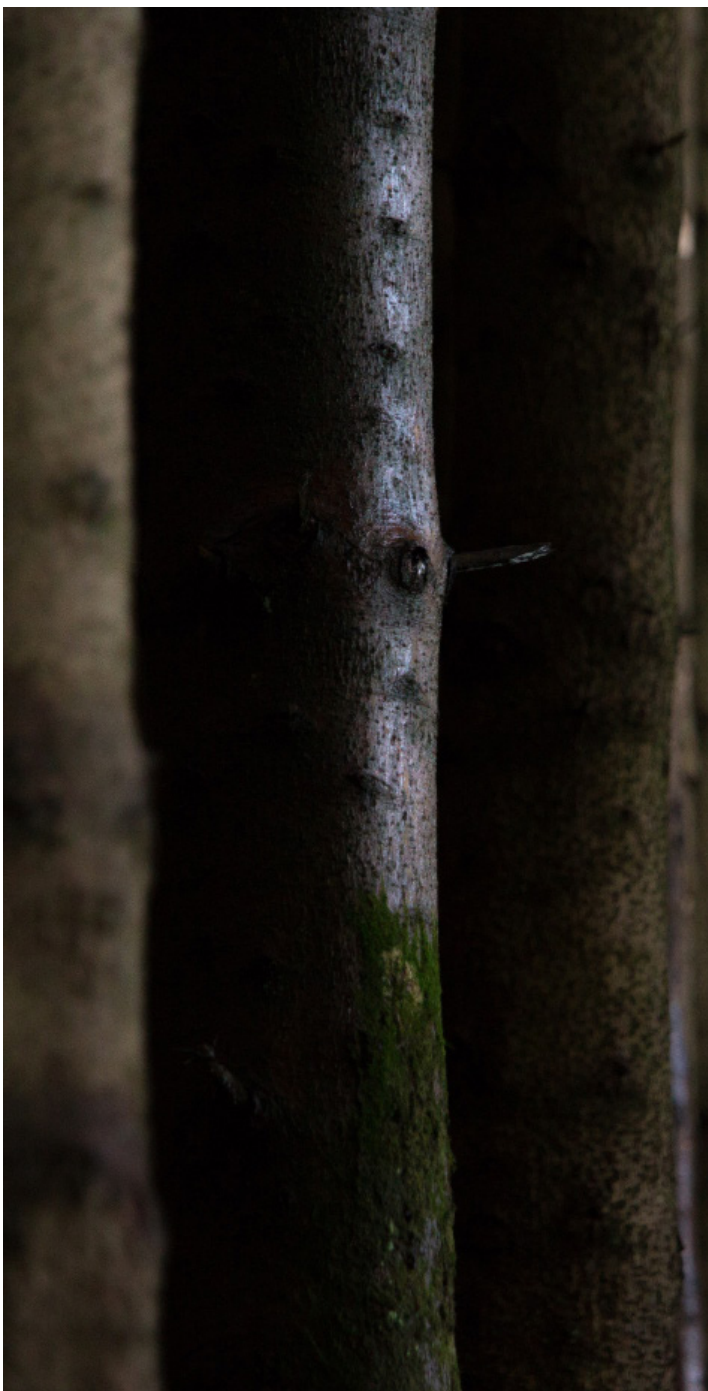
These trees will create a network of climate change, pest and disease resilient woodland across the UK.

Projects we support

You can use this grant for woodland creation, restocking, underplanting, enrichment planting, urban or parkland schemes, hedges and shelterbelts or to create resilient landscapes (e.g. for flood prevention or to prevent storm damage). We are looking for projects where the right trees are planted in the right places and where we know they will be given the right care through establishment.

You can use this grant to take risks and innovate with new species, mixes or silvicultural techniques and to introduce diversity (species and structural) into forests, woodlands and landscapes. If you are successful, we will pay 50p per tree to help towards the cost of your tree purchases.





Projects we can't support

We are looking to support projects that are doing things differently to create adapted resilient woodlands and features.

You can't use this grant to plant single species woodland or just to simply plant or replant trees that don't in some way make a positive contribution to our fight against climate change, pests or diseases. Projects planting a high proportion of just one species are unlikely to make it through our screening process (unless you can tell us how these will increase resilience).

We also can't support projects where the cost of purchase of trees is fully funded by another grant. Unfortunately, we can't support applications made by central government agencies.

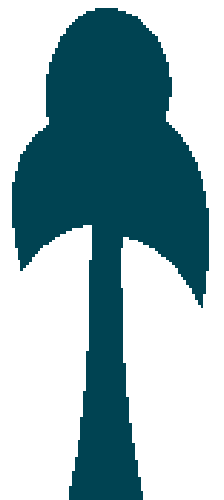
Who can apply?

You must be an RFS or RSFS member to apply. Corporate members are also encouraged to apply. If you are not already a member you can join the RFS at www.rfs.org.uk or the RSFS at www.rsfs.org.uk. You'll need to show your commitment to learning and best practice by remaining a member for at least the duration of your grant agreement (usually two years).

You must also own all of the land on which you would like to plant trees. If you are applying for the grant for someone else, you must provide evidence that you have permission to apply for this grant on their behalf. Grants can only be paid to the bank accounts of registered RFS or RSFS members.

To be eligible for a grant, your scheme must include a plan to plant a minimum of 500 trees in England, Wales, Northern Ireland or Scotland. There is no maximum number of trees that you can apply for through this scheme.

Although we can't except applications from central government agencies, we welcome applications from local authorities, schools and other charities, as well as individuals and companies.



When to apply for a grant

There is no application window (you can apply any time of year). We aim to deal with applications quickly so that you don't lose time waiting for the outcome of your application.

Applications will be assessed on a first come, first served basis. We aim to give you a decision within six weeks of submitting your application. Successful applicants will have two full planting seasons (1 October to 30 April) to carry out the work.

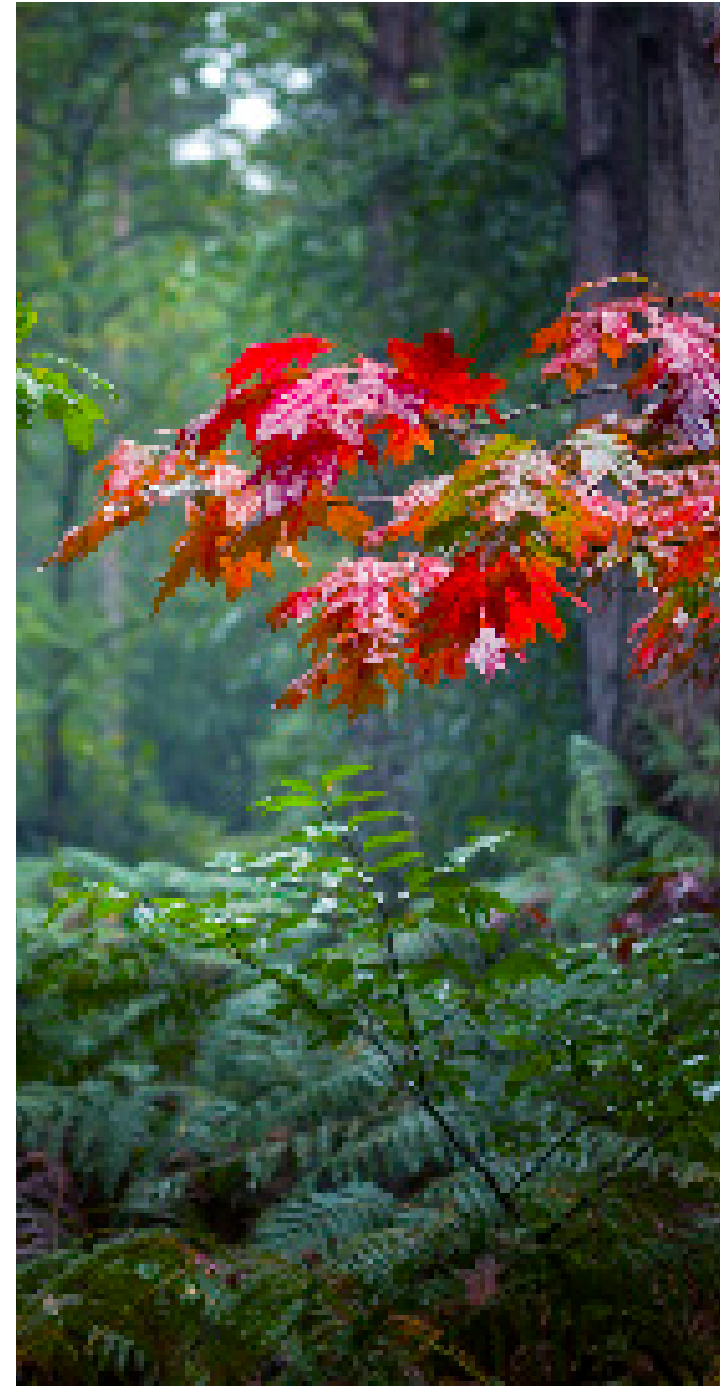
In order to claim your grant you must have all permissions in place and be compliant with all relevant legislation. We will ask for proof of consents and permissions when you make your application.



How we assess applications

You will primarily be assessed on your ability to:

- Make a positive contribution to creating a network of sustainable woodlands and treescapes by planting trees for adaptation to (or mitigation for) the negative effects of climate change, pests or diseases on our environment, people or woodland economies in the UK.
- Deliver your project to a high quality within the agreed time-frames.
- Care for newly planted trees as they establish and grow.



Additional information

Before we can award a grant we will need to know that your project can be carried out lawfully and will follow best practice forestry guidance. You will need to submit a management plan (if you plan to plant 5,000 trees or more) and a felling license (if required by law) with your application. For all applications, we will need to know how many (or what percentage) of each tree species you plan to plant and in which planting season.

If you plan to plant 5,000+ trees, you must also show us that you have considered the species of trees that you propose to plant with reference to your site conditions and future climate change predictions. You should use Forest Research's Ecological Site Classification (ESC) decision support tool to inform your planting proposal (where possible). We recognise that you may want to include tree species in your planting plan that are not included in your ESC report results but if you do this, you must explain your rationale. More information is given in our Grant Information document, which you should read carefully before you apply.

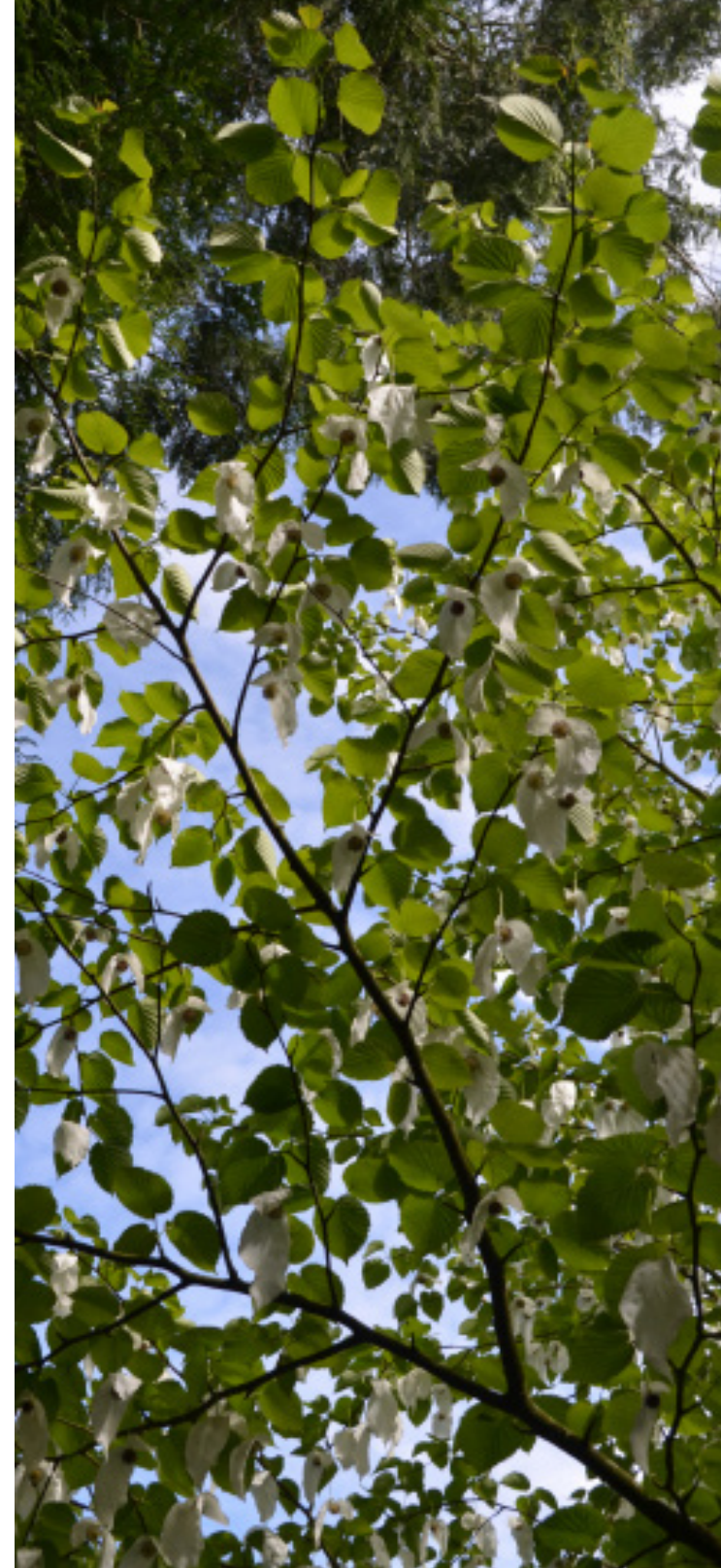
Please note that these grants may be classified as taxable income (unlike government grants). Please consult your financial advisor for more information.

Application process

Once you have all the permissions and consents in place, you can make an application online. You can save your application and return to it at any time.

Once you've successfully submitted your online form and uploaded your supporting documents you will receive an email from us to let you know your application has been safely received. We aim to let you know within six weeks of submission whether or not your application has been successful.

Applications will be assessed on a first come, first served basis. Due to the limited availability of grants, we may not be able to fund all eligible projects. We reserve the right not to comment on applications.





If we award you a grant

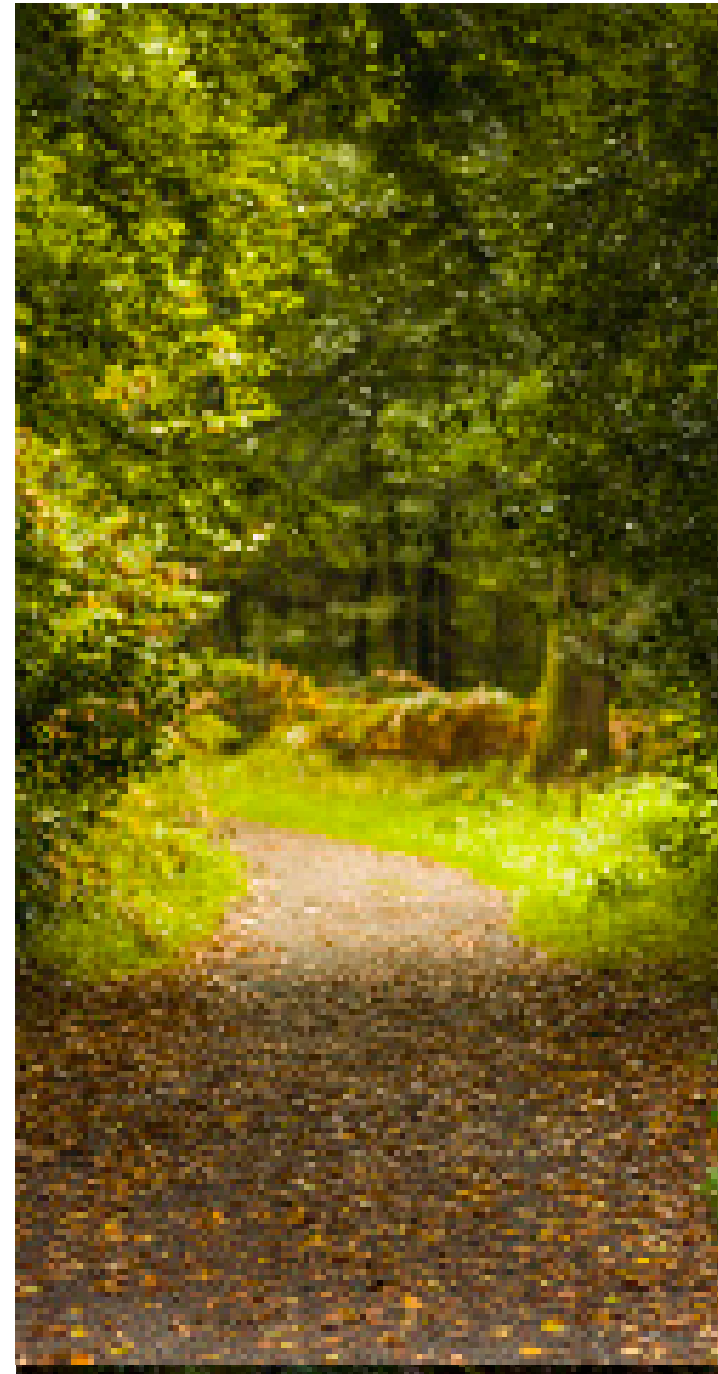
If we award you a grant, there are a few things you need to know:

- Your grant will not be secured until you have returned a signed copy of Standard Terms of Grant to us.
- Grants will be paid once you have submitted evidence that your trees will be supplied (e.g. an invoice or letter). Grants will be paid at a rate of 50p per tree. No other costs are eligible for grant payments under this scheme.
- Grant recipients must consent to allow access to the planted area(s) by a duly authorised person for the purpose of an audit up to four years following tree planting.
- We reserve the right to reclaim all or some of the grant if you fail to make good progress with the project, or (in our view) are unlikely to complete the project.

Using the grant with other funding

In order to fulfil our obligations to our partners and to prevent double funding, each 50p of funding provided by this grant must be directly attributable to one tree planted. You may use this grant alongside other sources of external funding if you can confirm to us that:

- a) You are receiving no additional external funding towards the cost of purchasing the trees (i.e. any other grants or funding received is for other tree planting activity, for example deer fencing, tree guards or ongoing care); or
- b) The grant you would receive from us constitutes no less than 51% of the total funding you will receive for the cost of purchasing the trees between the start and end date of the project.



Contact and more info

Make sure you have read the Grant Information document available to download from <https://rfs.org.uk/trainhugger>. This explains what will happen if you are awarded a grant.

If you would like to speak to someone about your application please call:

Jen Turner, RFS Development Manager.
Direct Dial: 01295 671021

To find out more about Trainhugger and GreenTheUK please visit their websites:

<https://www.trainhugger.com/>

<https://greentheuk.com/>